



The UroLift[®] System

Is a proven approach to treating enlarged prostate without heating, cutting, or removing tissue



AS SEEN ON TV

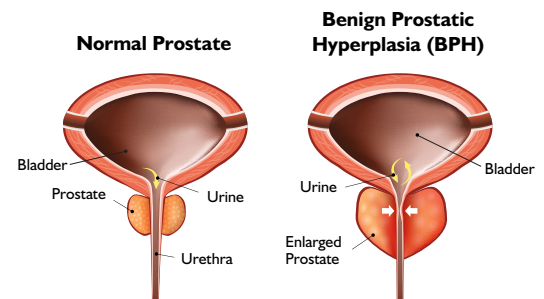
Understanding BPH and the Associated Symptoms

Benign Prostatic Hyperplasia, or BPH, is a common condition in which the prostate enlarges as men get older. Over 40% of men in their 50s and over 70% of men in their 60s have BPH.¹ While BPH is a benign condition and unrelated to prostate cancer, it can greatly affect a man's quality of life. As the prostate enlarges, it presses on and blocks the urethra, causing bothersome urinary symptoms such as:

- Frequent need to urinate both day and night
- Weak or slow urinary stream
- A sense that you cannot completely empty your bladder
- Difficulty or delay in starting urination
- Urgent feeling of needing to urinate
- A urinary stream that stops and starts

What Happens if BPH is Not Treated

Not treating enlarged prostate can lead to permanent bladder damage.² 87% of men who elect watchful waiting experience a worsening of symptoms over a 4 year time period.³



What is the UroLift System?

The UroLift[®] System is a minimally invasive procedure to treat an enlarged prostate. It is a proven option for patients looking for an alternative to medications or major surgery. The only leading enlarged prostate procedure that does not require heating, cutting, or destruction of prostate tissue.⁴⁻¹⁰

Advantages of the UroLift System:

- Safe and effective¹¹
- Risk profile better than reported for surgical procedures such as TURP¹²
- Rapid symptom relief, better than reported for medications¹³
- Only leading BPH procedure shown to not cause new and lasting sexual dysfunction*^{8,13-14}

Contact your doctor to determine if the UroLift System may be right for you.

To learn more about the UroLift System and hear about patient experiences, visit UroLift.com

*No instances of new, sustained erectile or ejaculatory dysfunction in the L.I.F.T. pivotal study

How Does it Work?



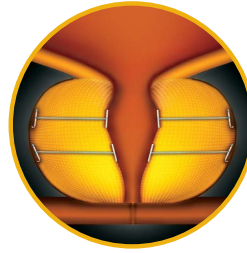
Step 1

The UroLift® Delivery Device is placed through the obstructed urethra to access the enlarged prostate.



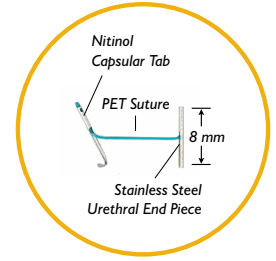
Step 2

Small UroLift Implants are permanently placed to lift and hold the enlarged prostate tissue out of the way and increase the opening of the urethra.



Step 3

The UroLift Delivery Device is removed, leaving an open urethra to provide symptom relief.



UroLift® Implant

Typically 4-6 implants are used per patient.¹³

Frequently Asked Questions

Where is the UroLift® System procedure performed?

The UroLift System procedure can be performed in either an office, ambulatory surgical center, or hospital. Please speak with your doctor to understand your options and decide which one may be best for you.

What happens post-treatment, during the recovery period?

Most patients do not require a catheter after having the UroLift System procedure. Patients can experience minimal downtime post-treatment and symptom relief as early as two weeks.¹³ Most common side effects are temporary and include painful urination, blood in the urine, pelvic pain, urinary urgency and/or the inability to control the urge.¹³ Rare side effects, including bleeding and infection, may lead to a serious outcome and may require intervention. Most symptoms typically resolve within two to four weeks after the procedure.

How long will my results last?

The UroLift System procedure is intended to be a long-lasting solution for BPH that utilizes a permanently placed implant. Clinical studies have proven durability out to five years.¹⁵ Individual results may vary.

What happens if the implants need to be removed?

The implants are intended to be permanent. The implant is made up of standard surgical implantable materials: a nitinol capsular tab, a stainless steel urethral tab, and a PET (polyethylene terephthalate) suture that holds the two tabs together. Your doctor can remove the urethral tab, if needed. The suture can be cut and the urethral tab can be retrieved with a standard grasper. The capsular tab and part of the suture will remain in place inside your body.

Is my prostate too large for this procedure?

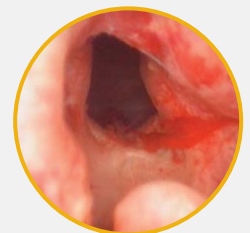
The UroLift System is indicated for men with prostate sizes up to 100 grams. Your doctor can perform a test to determine your prostate size.

Can I have an MRI after the UroLift System procedure?

The UroLift implant is MR conditional and patients can be safely scanned after a UroLift System treatment provided that the specific MRI instructions are met, which can be found at UroLift.com/mri-information.



Pre-procedure**



Post-procedure**

**Individual results may vary

1. Berry, S.J., et al., J Urology 1984; 2. Tubaro et al. 2003 Drugs Aging; 3. Djavan, Urology 2004; 4. Lokeshwar, Transl Androl Urol 2019; 5. Miano, Med Sci Monit 2008; 6. Mirakhor, Can Assoc Rad J 2017; 7. Woo, BJUI 2011; 8. McVary, J Urol 2016; 9. Gilling, Can J Urol 2020; 10. Kadner, World J Urol 2016; 11. Roehrborn Urology Clinics 2016; 12. Sonksen, EU Urol, 2015; 13. Roehrborn. J Urology 2013; 14. AUA BPH Guidelines 2003, 2010, 2018, amended 2019; 15. Roehrborn et al. Can J Urol 2017